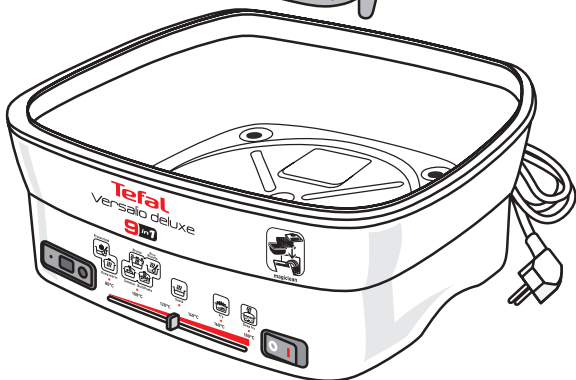
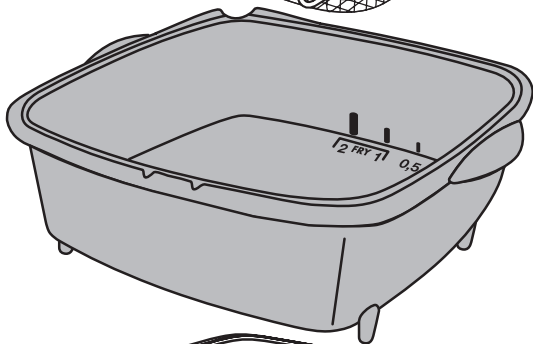
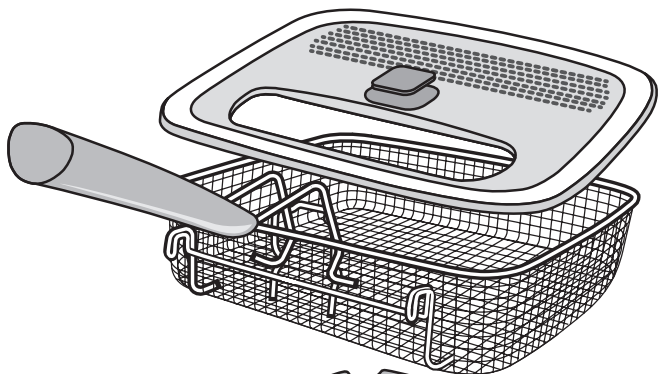


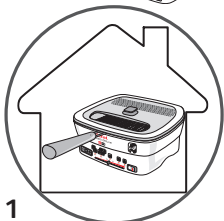
Tefal®

VERSALIO DELUXE

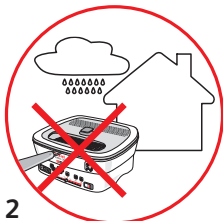


www.tefal.com

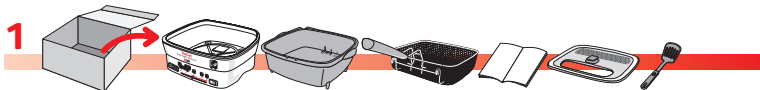




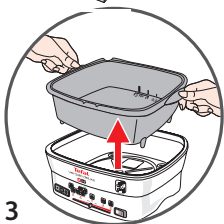
1



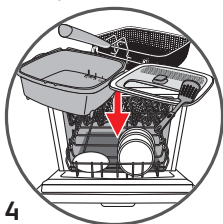
2



1



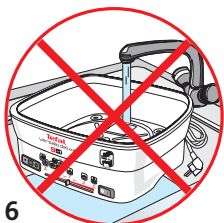
3



4



5



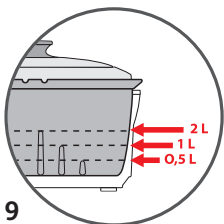
6



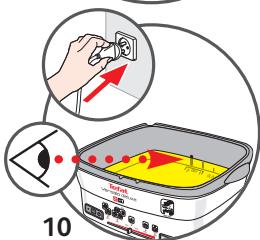
7



8



9



10

2



Fry



Deep fry



Fry

0,5 L

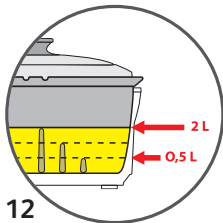


Deep fry

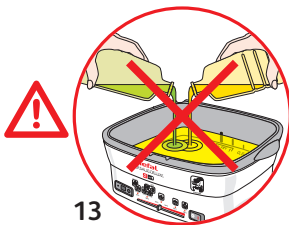
2 L



11



12



13



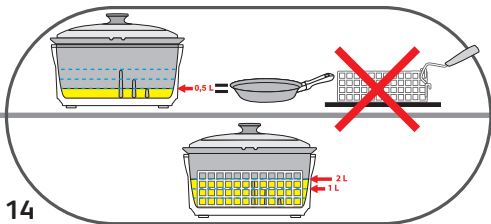
Fry

< 0,5 L



Deep fry

1 L → 2 L

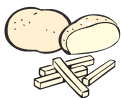


14

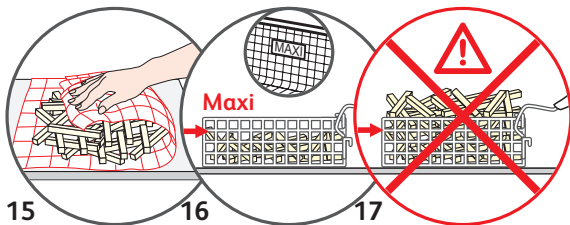
3



Deep fry



Max 1000 g



15

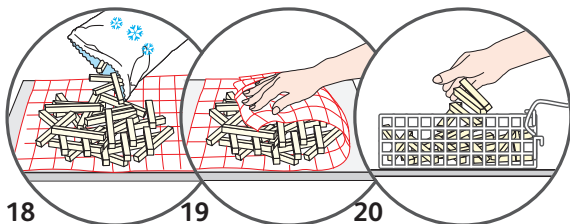
16

17

* * *



Max 750 g



18

19

20



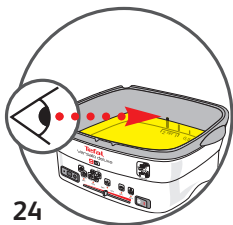
21

22

23



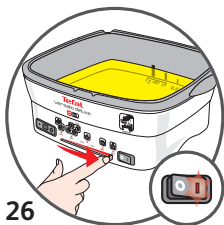
Deep fry



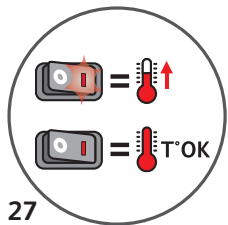
24



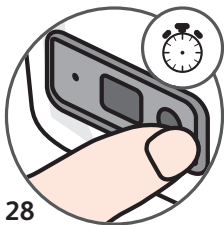
25



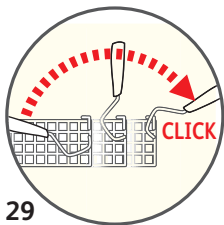
26



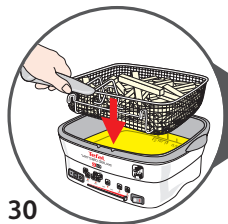
27



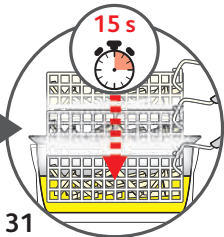
28



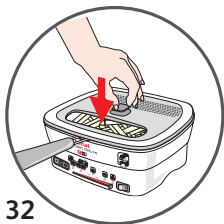
29



30



31



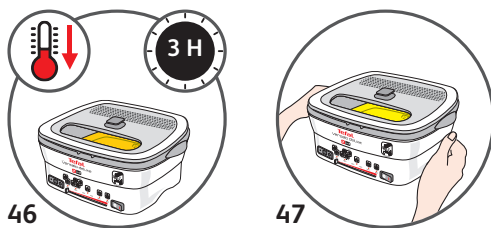
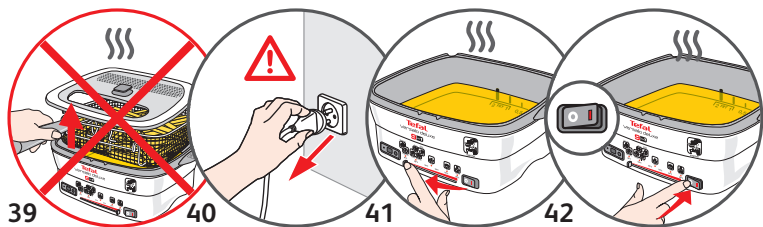
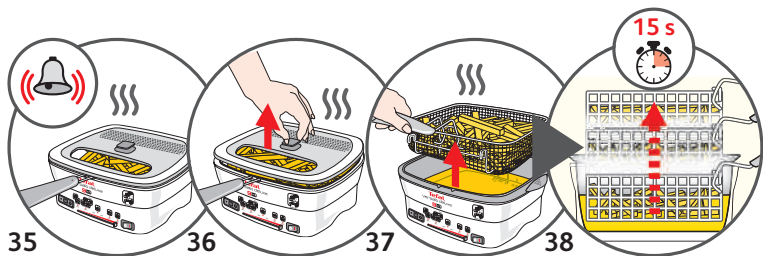
32



33



34









5 Deep fry / 180 °C



Deep fry








 2 L maxi				
	1000 g	15-16 min	4	
	550 g	10-11 min		
	750 g	13-14 min		
	400 g	7-8 min		



6 Fry / 160 °C



Fry

 0,5 L maxi			
	15 min	4	
	30 min	6	



7 Sauté / 130 °C



Sauté

x1	10 min	4

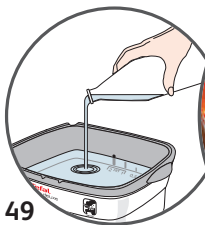


8 Simmer / 100 °C



Simmer

30 min	4



9 Boil/Pasta



Boil/Pasta

30 min	4



10 Rice/Risotto



Rice/Risotto

15 min	4



11**Braise**

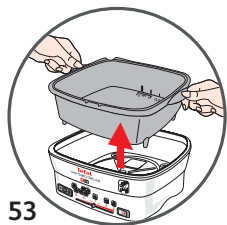
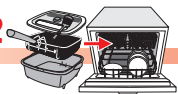
Braise

40
min

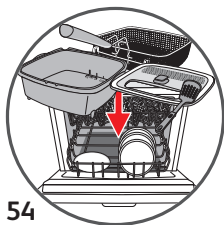
4

52

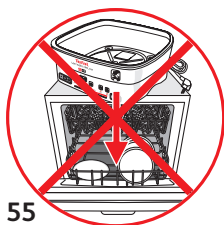




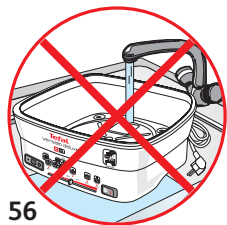
53



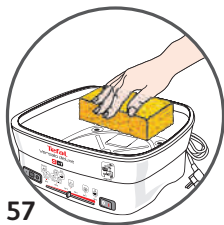
54



55



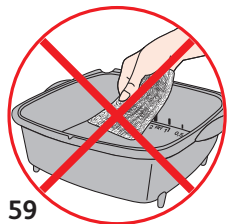
56



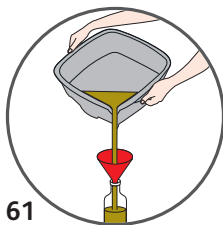
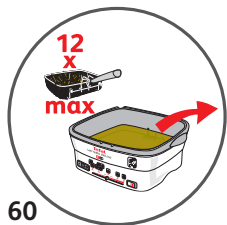
57

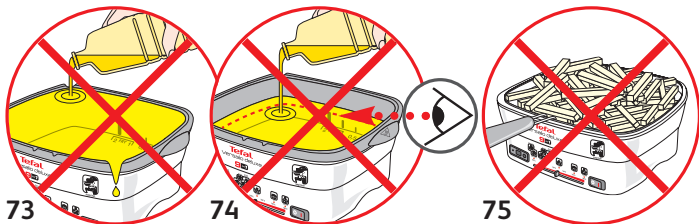
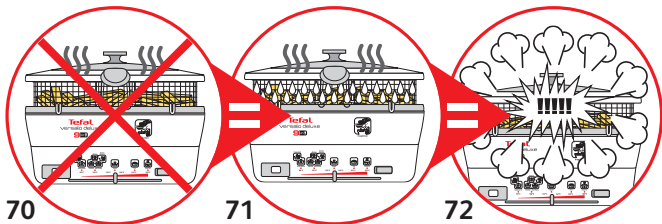
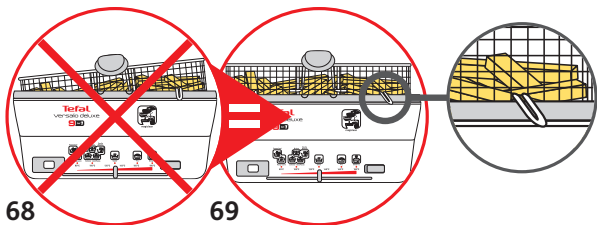
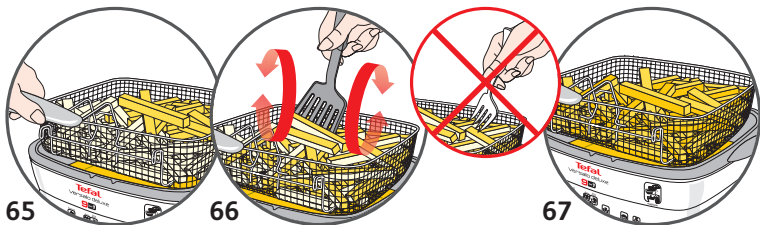


58



59



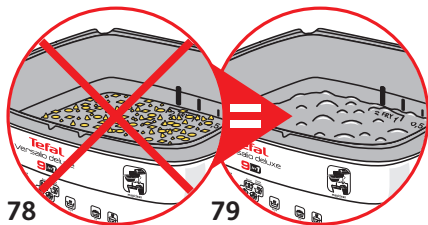




76



77



78

79

